

# Transform data into knowledge

Connect | Explore | Act

Integrate and query all your data in DISCOVER, the end-to-end platform for life sciences that empowers researchers and business users to quickly uncover valuable insights and make smarter decisions

For more than a decade, ONTOFORCE has been transforming the way life sciences companies bring together structured and unstructured data to generate new knowledge. This enables accelerated drug discovery, deeper understanding of research, optimized clinical trial design, and a faster go-to-market.

Trusted by leaders in the life sciences industry

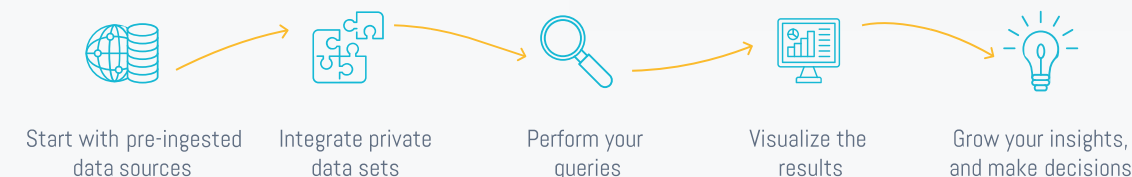


ONTOFORCE is a proud member of the Pistoia Alliance, collaborating with global life sciences leaders to drive innovation and establish industry-wide data standards.



Backed by ONTOFORCE's ISO 27001:2022 certification, DISCOVER ensures top-tier data security, safeguarding your research and insights with industry-leading standards.

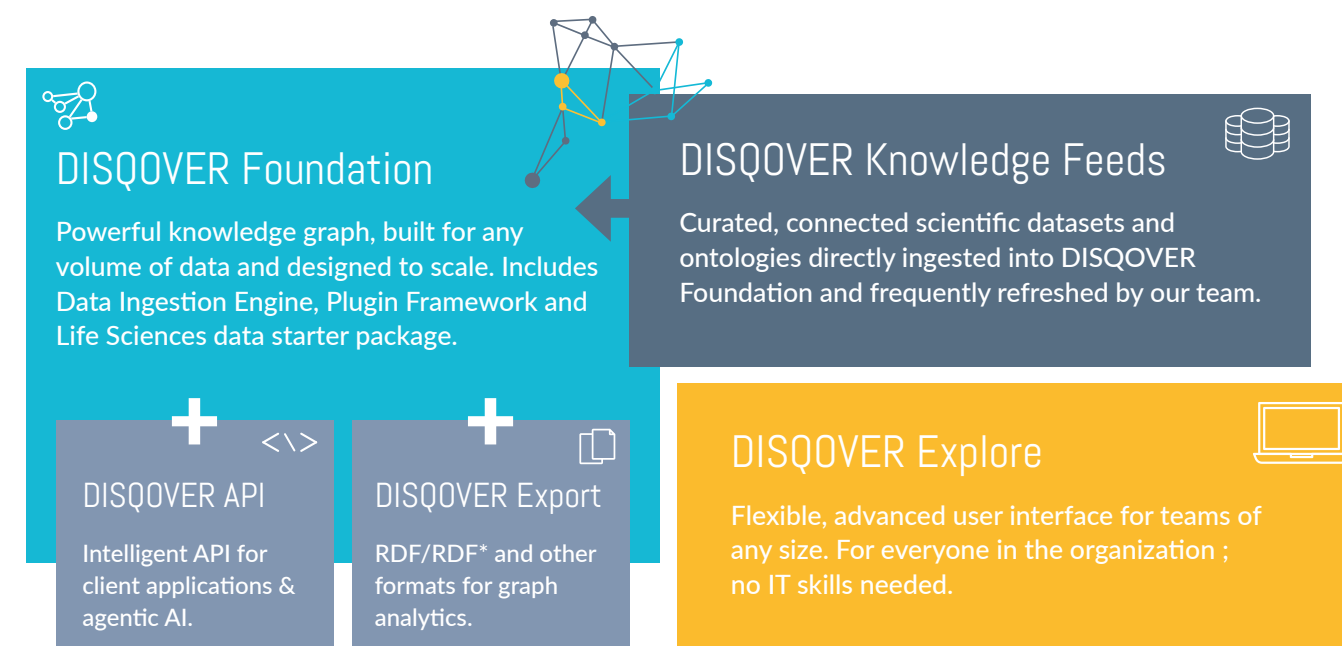
## Complex biomedical data made easy with DISCOVER



DISCOVER is ONTOFORCE's flagship product built on **knowledge graph** and **semantic search technology**, designed **exclusively for the life sciences industry**. It empowers researchers and data scientists to accelerate decision-making in drug development by revealing insights which would otherwise remain hidden.

DISCOVER integrates and harmonizes your diverse data sources and **enriches** them with **pre-ingested** biomedical and other publicly available life science data. Through an **intuitive user interface** and **extensive APIs**, DISCOVER allows users to search, explore, and filter the connected data.

DISCOVER can be incorporated into existing **AI/ML workflows**, enterprise data, analytical solutions, and other systems to enhance an organization's overall data management strategy with harmonized, linked, and clean data.



# Optimize all your workflows with integrated and enriched data

From target identification and hypothesis testing in early discovery, to clinical trial design, CMC processes, and commercialization applications in later stages, DISQOVER accelerates workflows across the entire drug development lifecycle, by querying your data for answers.



"Among oncology studies, which plasma biospecimens are accessible, and what consent restrictions apply to them?"

"Which potential targets have multiple association evidences for interstitial lung disease or other pulmonary fibrosis diseases?"

"What clinical trial data exist on cardiovascular events in adult oncology patients treated with tyrosine kinase inhibitors?"

"Which clinical sites were involved in studies recruiting patient population with JAK2 V617F mutation and for myeloproliferative diseases?"

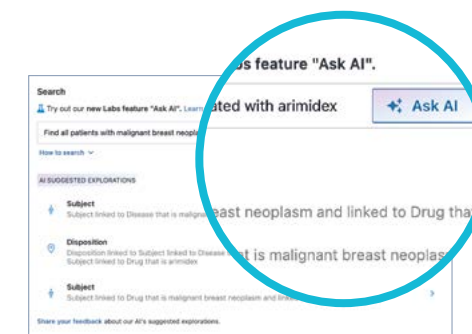
"What approved drug products list Fluticasone Propionate as their active ingredient, and what are their respective dosage forms, routes of administration, and strengths?"

"Which medicines might be subject to drug shortage for the compound CP-1599? Where are those medicines registered?"

DISQOVER

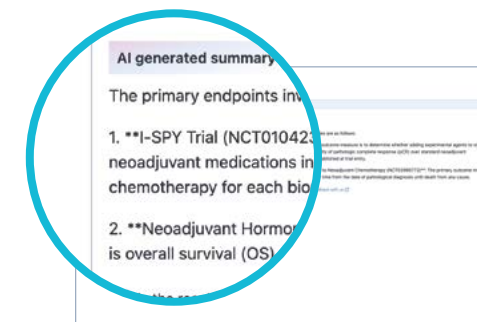
A laptop screen displaying the DISQOVER web application interface. The interface shows a sidebar with navigation options like 'Home', 'Search', 'Reports', and 'Settings'. The main content area displays a dashboard with various charts, including a bar chart, a pie chart, and a line chart, representing different data metrics.

## DISQOVER meets AI



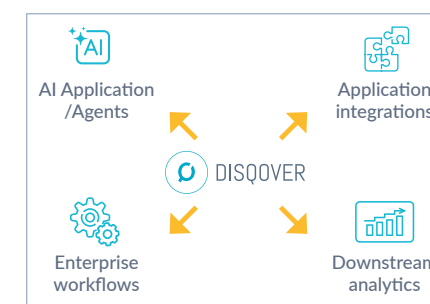
### DISQOVER Assistant search

- An in-app AI assistant that translates natural language into structured DISQOVER queries.
- A human-in-the-loop approach that guides users from open questions to confident data exploration.
- Users stay in control: choose, edit, or build on the suggestion that fits best.



### DISQOVER Assistant summarization

- An AI-powered summarization feature integrated into DISQOVER's result view.
- Users select instances and receive a natural language summary that distils core insights.
- Quickly extract key information, trends, or highlights without reading every detail.



### AI-ready data

- AI delivers its full potential only when fueled by clean, connected, and harmonized data.
- Power your AI applications with semantically connected data via DISQOVER's robust APIs, enabling seamless real-time integration with existing platforms and workflows

The Target Assessment Data Lake powered by DISQOVER, represents a transformative step in our mission to bring innovative therapies to patients more efficiently. This initiative has streamlined one of the most critical aspects of our drug discovery process: target evaluation.



**Marcin von Grotthuss**

Director, Data Integration & Analytics at Takeda Development Center Americas, Inc.





# From data to insights

## How DISQOVER delivers:

### ✓ Enterprise-proven life science platform

An end-to-end scalable data and search platform that semantically links internal, public, and licensed pharma datasets. Its open architecture ensures interoperability and supports FAIR principles. Preloaded with trusted biomedical data. Built exclusively for the life sciences industry.

### ✓ Seamless data integration

Integrate, harmonize, and link siloed data into a unified knowledge graph easily yourself. Visual, no-code pipelines make data importing and transformation simple. Full data provenance guarantees trusted decisions and complete auditability.

### ✓ Advanced search

Find what matters faster thanks to powerful semantic search, synonym matching, and intuitive natural language querying. DISQOVER understands context and meaning, not just exact keywords.

### ✓ AI/ML acceleration

Power AI/ML systems, chatbots and agents, with trustworthy, enterprise-wide data through the DISQOVER Knowledge Graph.

### ✓ Your data, linked to 80+ trusted life science sources

Your own datasets are continuously and automatically linked with the latest scientific data and ontologies from over 80 biomedical, clinical, regulatory, and translational sources. This means your analyses always use the most up-to-date information.

### ✓ Discovery for everyone

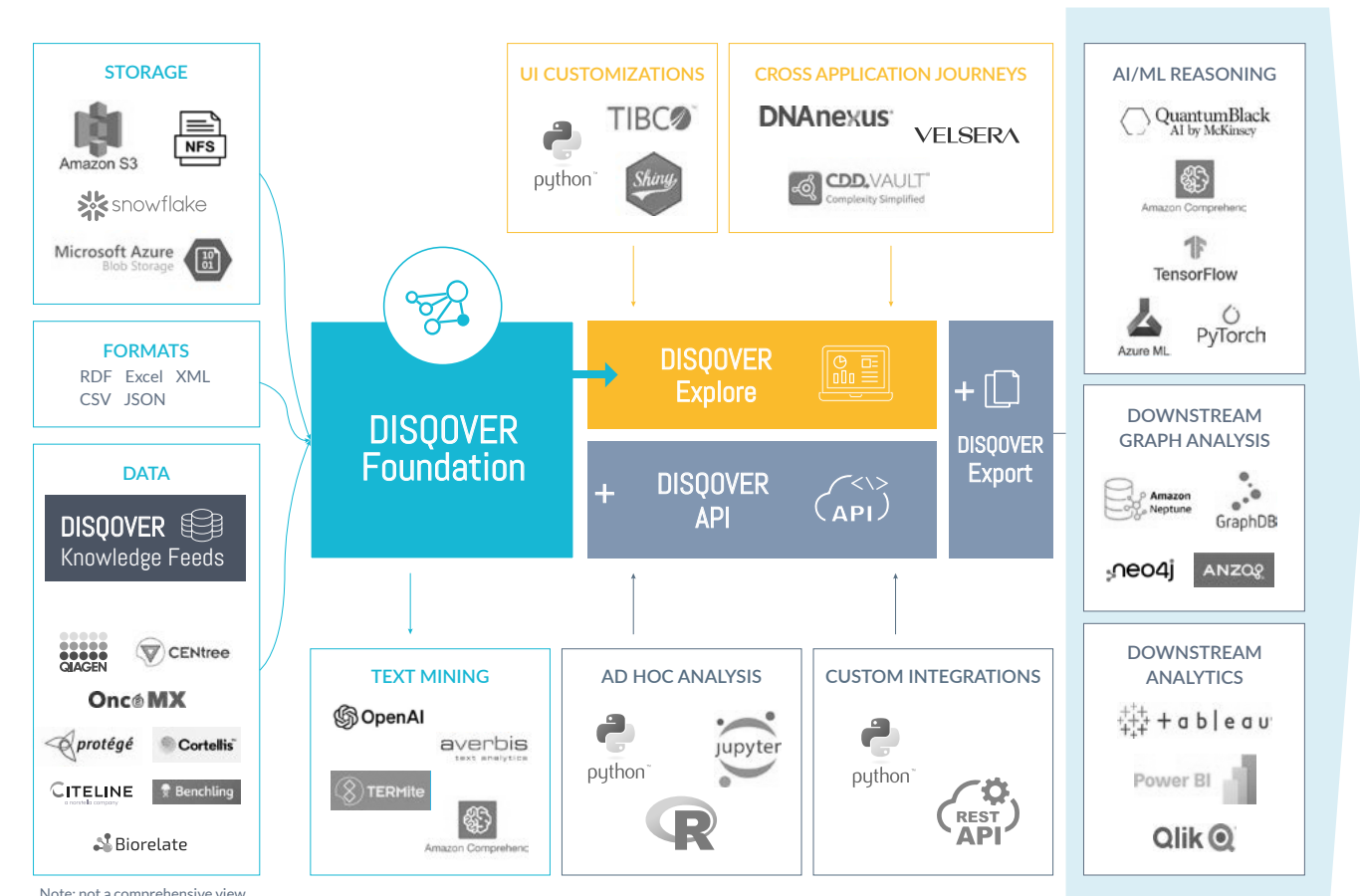
Effortless search, visualization, and reporting for all, no IT skills required, via an intuitive interface. The AI-powered Discovery Assistant accelerates query formulation and results summarization with a human-in-the-loop AI assistant, ensuring trustworthy, transparent results.

### ✓ Extensible automation framework

Automate data pipelines, detect data updates, refresh vector embeddings, and push results downstream via APIs using DISQOVER's flexible plugin architecture.

## DISQOVER is at the heart of your ecosystem

Built exclusively for the life sciences industry, DISQOVER seamlessly connects into your existing tools and data assets. By supporting organizations in implementing the FAIR data principles, DISQOVER ensures that data is findable, accessible, interoperable, and reusable, driving collaboration, compliance, and innovation across the enterprise.



ONTOFORCE is not giving you just a framework - they give you a massive package of pre-linked public data that you can immediately plug your internal data into. On top of this, DISQOVER's intuitive interface makes onboarding users straightforward so they can quickly start exploring the linked data.



**Nathalie Romanov**

Data Strategy Management Merck Healthcare

# About ONTOFORCE

For more than a decade, ONTOFORCE has helped life sciences organizations overcome one of their biggest challenges: bringing together structured and unstructured data to unlock new insights. These insights optimize workflows, deepen research understanding, and speed up time-to-market.

At the core is DISCOVER, our flagship platform built on knowledge graph and semantic search technology. DISCOVER empowers researchers and data scientists to uncover hidden relationships, accelerate decision-making, and fuel innovation across the entire drug development lifecycle.

Designed to integrate seamlessly into existing AI/ML workflows, enterprise data solutions, and other systems, DISCOVER strengthens organizational data strategies with harmonized, linked, and clean data, transforming complexity into clarity and insight.

Get in touch to schedule a demo  
and learn more about what's  
possible with DISCOVER

 [ontoforce.com](https://ontoforce.com)  
 [info@ontoforce.com](mailto:info@ontoforce.com)

